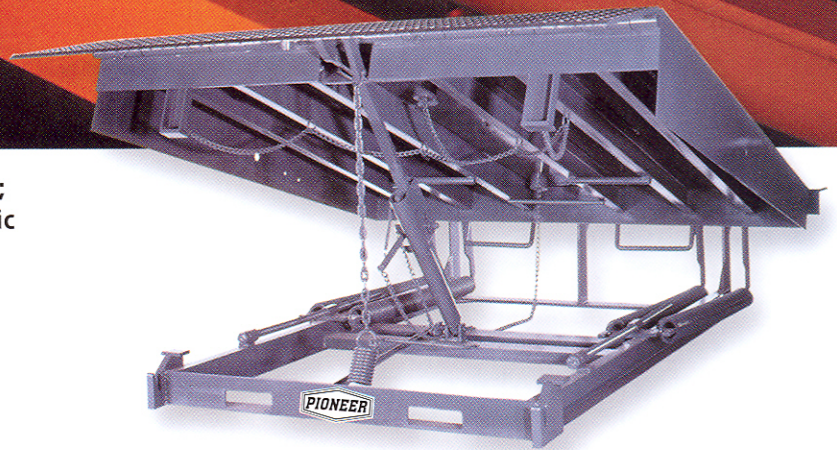


# P2000 Series

20,000; 25,000; 30,000; 35,000;  
40,000; and 45,000 lb. Dynamic  
Capacities (Larger Capacities  
Available)

6', 6' 6", and 7' Widths  
6', 8', and 10' Lengths  
(Custom Sizes Available)



## ■ Dependable PIONEER Levelers Keep Working For You.

Offering a variety of dynamic capacities, the P2000 Series Leveler provides 18" and 20" lip options, in addition to many other custom features. Dual 60,000 lb. safety legs provide additional strength and support. Deck and lip are constructed of 55,000 lb. minimum yield steel tread plate. Lip keepers serve as night locks for security and provide safe cross-traffic support when unit is stored. Dock bumpers and grease fittings on lip hinge are standard with each unit.

## ■ Warranty

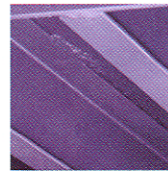
PIONEER offers a 3-year warranty on structural members and main springs. A 1-year warranty is provided on mechanical and miscellaneous parts (including materials, labor, and freight).

## ■ Guarantee

Pioneer will provide our standard warranty or match any documented competitive warranty in the industry for comparable models. There is no fine print. *We build it and we guarantee it!*

### Metric Specifications

9,072; 11,340; 13,608; 15,878; 18,144  
and 20,412 kg Dynamic Capacities  
1,829; 1,981 and 2,133 mm Widths  
1,829; 2,438 and 3,048 mm Lengths



PIONEER's solid steel **Structural "C" Channel** offers matchless deck support—providing a 39% greater resistance to elastic bending moments than other industry designs.



**Positive Hold-down Device** allows up and down float when in service.



Fully mechanical, single-handed **Pull-chain Operation** means **NO LIFTING** or **STRAINING**.



The P2000's simple, **Direct Extension Spring Design** has no moving parts—nothing to service!

Quality  
Dock  
Levelers

Long  
Lasting

Easy to  
Install  
and  
Operate

Safe



*Rugged. Dependable. PIONEER.*

# P2000 Series

## Features & Specifications

ALL PIONEER Levelers meet or exceed the performance requirements of CS202-56., O.S.H.A., and A.N.S.I. MH14.1-1984

### Durability

- Deck and lip are constructed of **55,000 lb. Minimum Yield Steel Tread Plate**.
- All PIONEER P Series Levelers are exclusively equipped with **Solid Steel Structural "C" Channel** for maximum deck support. Each beam is fully welded to a **Full-width Header Plate** at the front of the Leveler.
- **Direct Extension Spring Design** has no moving parts—nothing to service!
- **Extra Heavy Rear Angle** with **Strategically Placed Gussets** provides maximum structural support and frame strength.
- **Molded Bumpers** included to protect dock face and Leveler from truck damage.
- **Continuous Hinge Design** with **Grease Fittings** included as standard.

### Easy Installation

- Front and rear **Forklift Slots** provide easy access for maneuvering and installation. **Side Ports** allow unit to be suspended and lowered into pit from dock floor.
- Custom engineered **Rear Angle** is two inches wider than the Leveler, providing extra area to weld at both ends.

### Simple Operation

- Conveniently located **Pull-chain** provides easy activation of deck and lip.
- Direct extension **Spring Counterbalance** provides easy walk-down.
- **Operating Range** of 12" above and 12" below dock allows Leveler to be recycled with the truck in position.
- **Automatic Lip** locks into position when extended and releases when unit is walked down to position on truck floor.

### Safety

- **Maintenance Struts** are a standard feature on all P Series Levelers.
- **Positive Hold-down Device** allows up and down float when in service.
- PIONEER's **Counterbalance System** operates on simple, **Direct Extension Spring Design** with *no moving parts*. **Adjustment Nut** is located at the front of the Leveler for safe, easy access.
- **Lip Keepers** serve as night locks for security, and provide safe **Cross-traffic Support** when unit is stored. Deck tilts to a maximum of 4" from side to side to compensate for unlevel trucks.
- **Safety Legs** automatically provide below dock support in event of premature truck departure.
- **Working Range Toe Guards** protect workers from injury during loading and unloading.

### Dealer Locations

PIONEER Loading Dock Equipment is available nationwide. For the location of your nearest PIONEER Dealer, call us **toll free at 1-800-251-3382**.



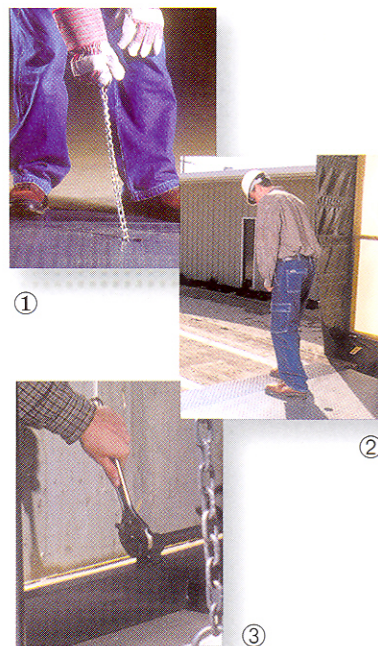
Rugged. Dependable. PIONEER.

P.O. Box 338 • Spring Hill, Tennessee 37174  
phone: 931-486-2296 • fax: 931-486-0316 • [www.pioneerleveler.com](http://www.pioneerleveler.com)

PIONEER offers a complete line of finely crafted, technologically advanced loading dock equipment, including **Mechanical and Hydraulic Pit Levelers, Edge-of-Dock and Top-of-Dock Levelers, Portable Dock Boards, Vehicle Restraints, Dock Seals and Shelters**, and other quality accessories. Just **call us toll free** for personal, professional customer assistance and responses to all of your product needs.

toll free  
**1-800-251-3382**

Simple Operation



- ① Conveniently located pull-chain provides easy activation of deck and lip.
- ② Direct extension spring counterbalance provides easy walk-down.
- ③ Adjustment nut is located at the front of the Leveler for safe, easy access.

